

[en](#) | [fr](#) | [de](#)

[Event](#) | 02.03.2011

Time for being eco-logical

Moving beyond the 20% emission reduction target

15:00-15:15

General introduction

Presentation of interim results of study on moving beyond the 20% GHG emission

reduction target **Michel Colombier** - Director of IDDRI (Institute for Sustainable Development and International Relations)

15:15-16:30

First session "Should the EU move beyond its 20% emission reduction target?"

- *The position of the UK and the implementation of the UK climate law*
David Kennedy - Chief Executive UK Climate Change Committee
- *Presentation by the European Commission on moving beyond 20%*
Stefaan Vergote - Head of Unit for Strategy and Economic Assessment / DG CLIMA
- *State of play in the European Parliament*
Bas Eickhout - MEP and Rapporteur on the "Moving beyond 20%" report
- *Debate (30 minutes)*

16:30-16:45

Break

16:45-18:00

Second session - "Opportunities and challenges of moving beyond the 20% target"

- *Sectoral policies and the potential of energy savings*
Wolfgang Eichhammer - Deputy Head Competence Centre Energy Policy and Energy Systems
- *Business views on implementation of climate policies*

- **Marco Mensink** - Deputy Managing Director of CEPI (European Paper Industries)
- **Sandrine Dixon** - Cambridge Programme for Sustainability Leadership

- *Debate (30 minutes)*

Recommended

Press release

<https://www.greens-efa.eu/de/artikel/press/vote-on-eus-fiscal-rules-ignores-scars-of-financial-crisis-will-lead-to-more-austerity>



[MEPs adopt Ecodesign and Right to Repair Regulations](#)

23.04.2024

Press release



[EUCO: EU Strategic Agenda needs to focus on climate ch...](#)

17.04.2024

Press release

<https://www.pexels.com/search/gas%20burning/>

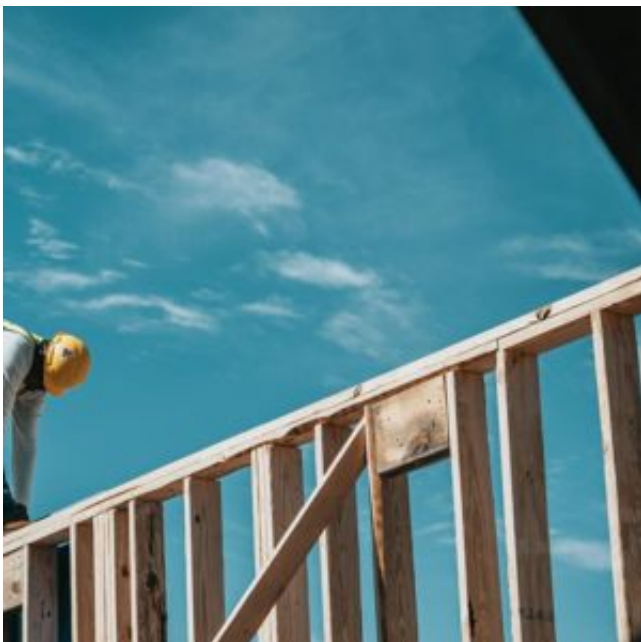


[MEPs set to approve agreement on reducing methane emis...](#)

09.04.2024

Press release

© josh-olalde



[MEPs vote in favour of more energy efficient buildings](#)

12.03.2024

Responsible MEPs



Bas Eickhout

Vice-President

Contact person



Delphine Chalençon

Advisor on Employment and Social Affairs

Please share

[•E-Mail](#)