

# Land concentration in Europe

Sylvia Kay

Environmental & Agrarian Justice Programme

Transnational Institute (TNI)

Conference 'Access to Land for Farmers in the EU'

Brussels, 7 December 2016



# LAND CONCENTRATION IN EUROPE AT A GLANCE



**3% OF FARMS**  
>100 ha

**OWN 52%**  
**OF FARM LAND**

336,000 farms control  
almost 91 million ha



**WHILE 75 %**

**OF FARMS** < 10 ha

**OWN 11%**  
**OF FARM LAND**

8 million farms control  
19 million hectares

20% of farms, between 10 and 100 ha,  
control 37%



Utilised Agricultural Area (UAA)

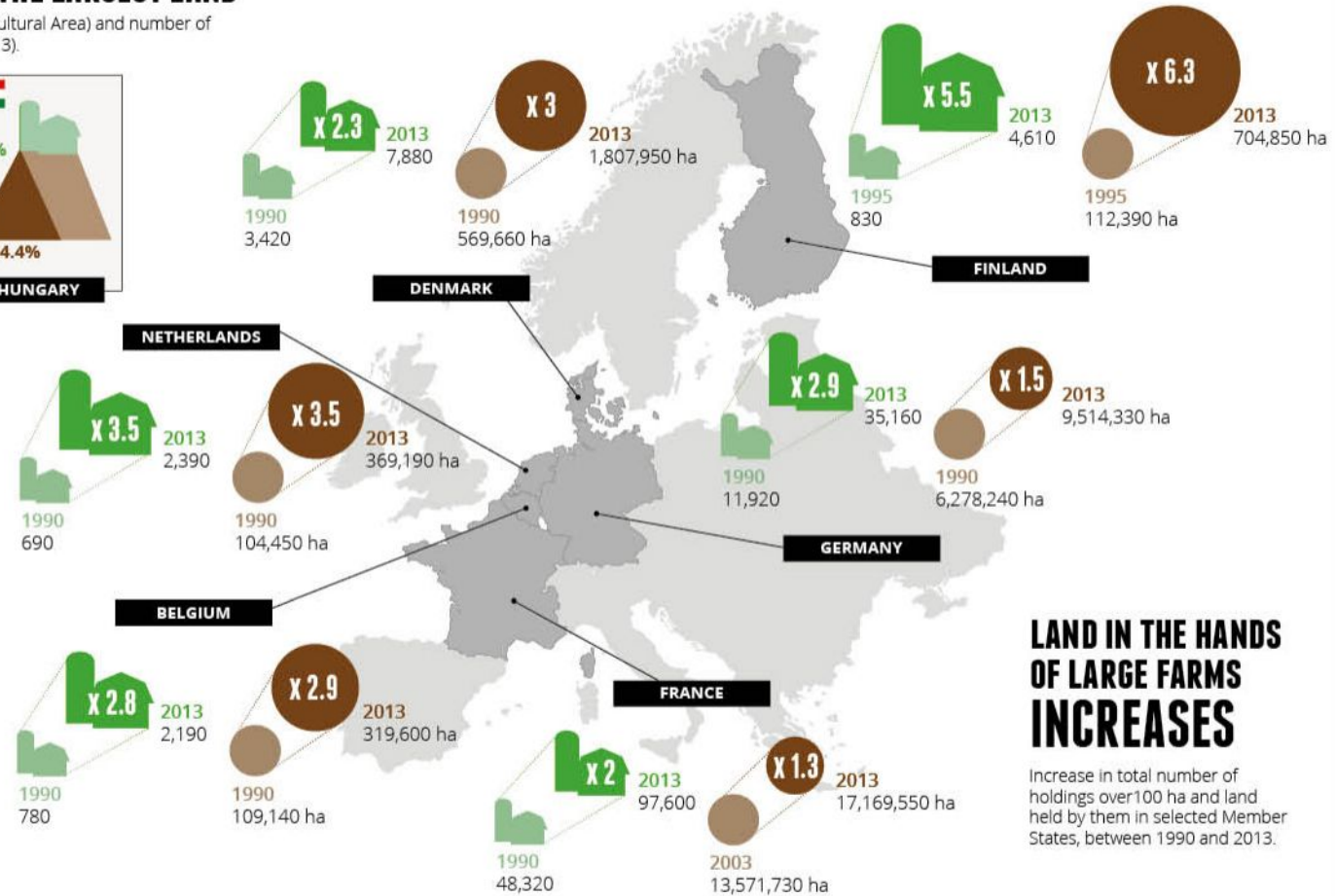
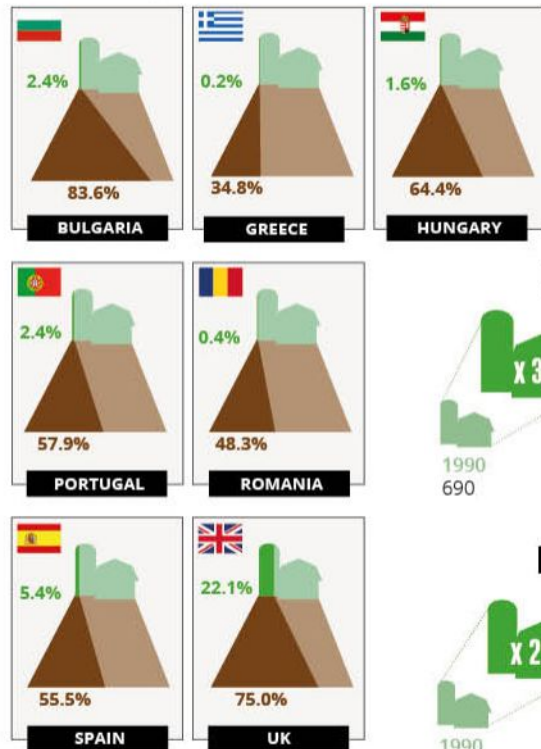
Source: Eurostats. TNI's complete data set of fully referenced statistics for all EU members can be found here: <https://www.tni.org/en/files/documents/land-for-the-few-the-state-of-land-concentration-in-europe-database-for-all-eu>



# LARGE-SCALE FARMING SPREADS ACROSS THE EU

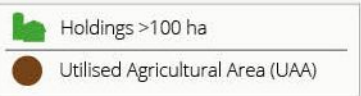
## THE LARGEST FARMS CONTROL THE LARGEST LAND

**AREA** Farms >100 ha: Total UAA (Utilised Agricultural Area) and number of holdings in selected Member States (2013).



## LAND IN THE HANDS OF LARGE FARMS INCREASES

Increase in total number of holdings over 100 ha and land held by them in selected Member States, between 1990 and 2013.



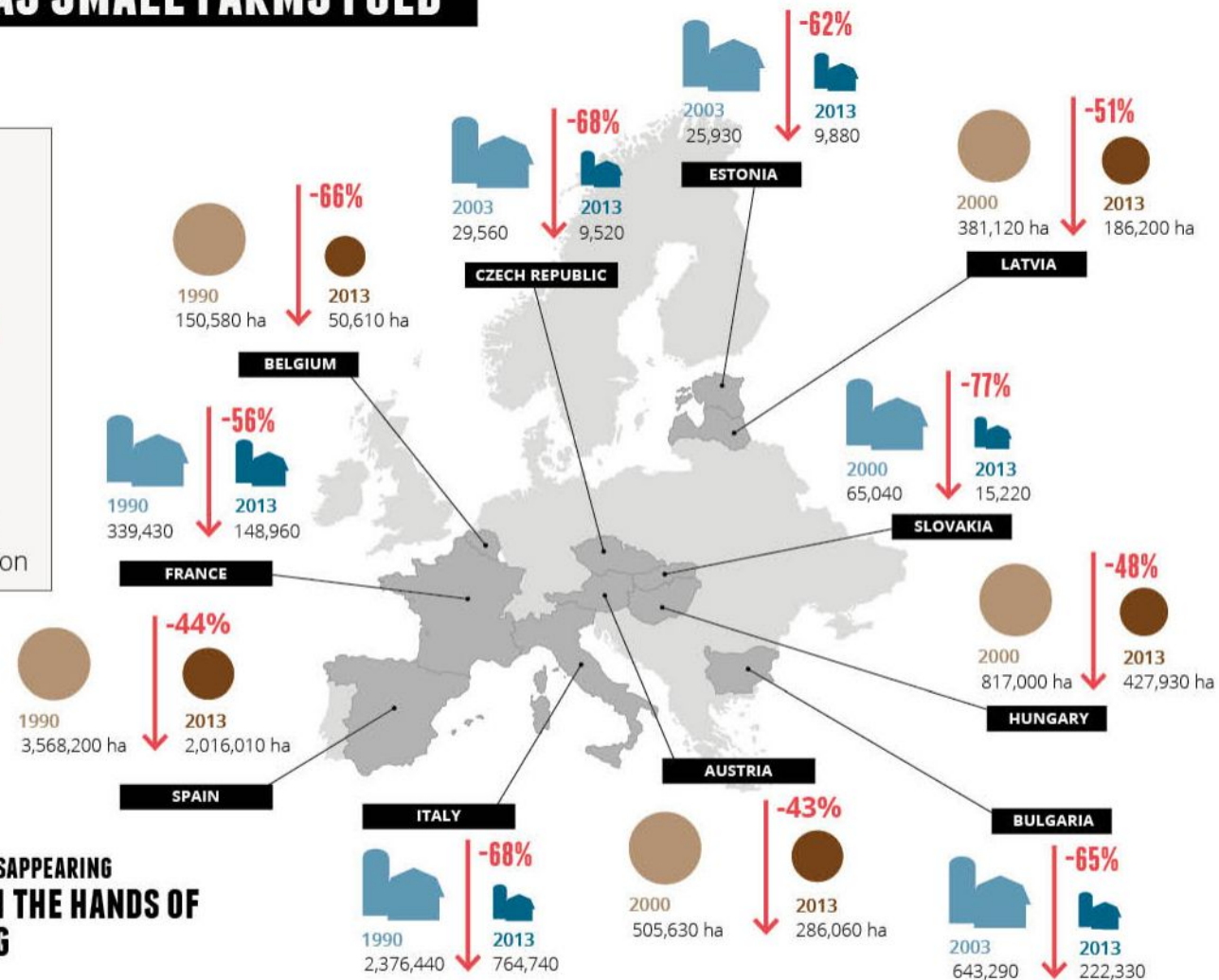
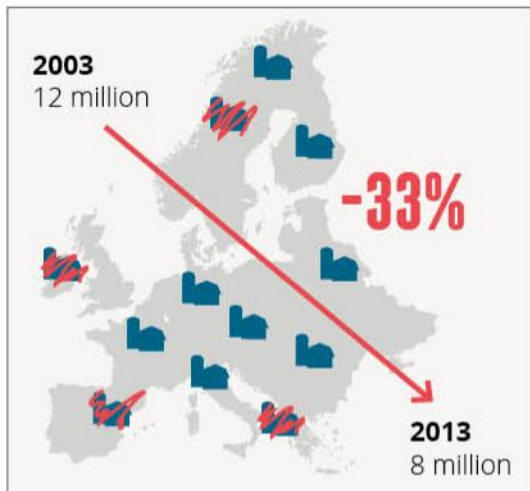
Source: Eurostats. TNI's complete data set of fully referenced statistics for all EU members can be found here: <https://www.tni.org/en/files/documents/land-for-the-few-the-state-of-land-concentration-in-europe-database-for-all-eu>



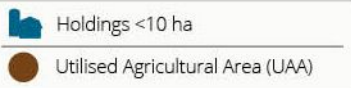


# AS SMALL FARMS FOLD

OVER THE LAST DECADE  
THE EU LOST A THIRD  
OF ITS SMALL FARMS



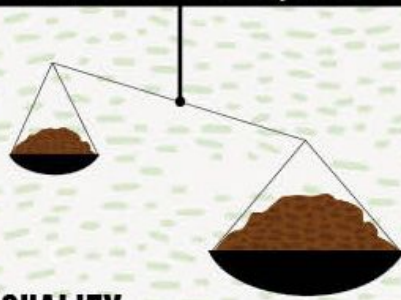
THROUGHOUT THE EU SMALL FARMS ARE DISAPPEARING  
& THE PERCENTAGE OF LAND IN THE HANDS OF  
SMALL FARMERS IS SHRINKING



Source: Eurostats. TNI's complete data set of fully referenced statistics for all EU members can be found here: <https://www.tni.org/en/files/documents/land-for-the-few-the-state-of-land-concentration-in-europe-database-for-all-eu>



# STRUCTURAL LAND INEQUALITY IN THE EU



## MEASURE OF FARMLAND INEQUALITY

for selected Member States in 2013



0.82

**LAND IN THE EU  
IS MORE  
UNEVENLY  
DISTRIBUTED THAN  
WEALTH** in 2013

0.3



Gini coefficient  
for wealth


Gini coefficient  
for farmland

**THE GINI COEFFICIENT IS A MEASURE OF INEQUALITY ON SCALE OF 0 - 1.**

A zero coefficient means that, in the case of farmland distribution, all agricultural holdings hold the same amount of farmland.

A coefficient of 1.0 means that, in the case of farmland, a single agricultural holding holds all the farmland.

For wealth, the Gini coefficient refers to the distribution of financial wealth amongst households.

 Utilised Agricultural Area (UAA)

Source: Eurostats. TNI's complete data set of fully referenced statistics for all EU members can be found here: <https://www.tni.org/ev/files/documents/land-for-the-few-the-state-of-land-concentration-in-europe-database-for-all-eu>

## Land concentration threatens the EU model of agriculture based on sustainable, family farming

- + Land concentration interacts with and is reinforced by a number of other processes (**land grabbing, land speculation, land artificialisation, highly uneven distribution of CAP benefits, and food market concentration**) that are generating a **problem around access to land** in Europe
  - + **exit** of Europe's small farmers
  - + **'entry denial'** of young and aspiring farmers
- + This has real **implications for European food security, employment, welfare, and biodiversity** as with the demise and marginalisation of small-scale farming in Europe, the multiple benefits of this type of farming system and way of life are also eroded.



THANKS!